

ORGAN DONATION WEEK 20-26 SEPTEMBER 2021

COLOURING-IN SHEETS

**live life
give life**

MEET
THE MIGHTY
ORGANS



ORGAMITES™

IT'S WHAT'S INSIDE THAT COUNTS

DISCOVER MORE AT ORGAMITES.COM

OUR PARTNERS



ONASSIS
FOUNDATION



Canadian
Blood
Services
BLOOD
PLASMA
STEM CELLS
ORGANS
& TISSUES



Giving
to help
others

SUPPORTED BY

NHS
Blood and Transplant

ORGAN
DONATION
SCOTLAND



SUPERHEROES

★ WANTED ★

ORGAMITES.COM



DISCOVER YOUR INNER POWERS WITH THE MIGHTY ORGAMITES

OUR PARTNERS



ONASSIS
FOUNDATION



Canadian
Blood
Services
BLOOD
PLASMA
STEM CELLS
ORGANS
& TISSUES



Giving
to help
others

SUPPORTED BY

NHS
Blood and Transplant

ORGAN
DONATION
SCOTLAND



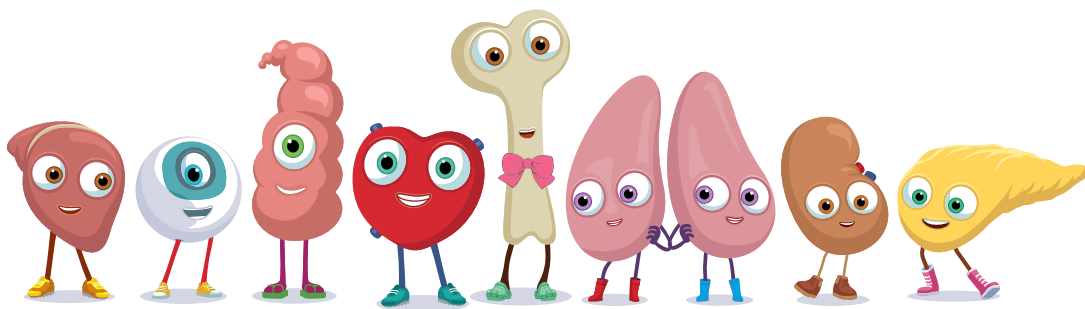
INTRODUCING THE MIGHTY ORGAMITES

They're a team of 9 life-saving organs (led by Captain Marrow) found in every one of us. They're known as the mighty organs because they represent the most-donated parts of the body.

As the only global children's organ donation awareness programme of its kind, the Orgamites consists of an ever-growing range of fun, educational tools and resources – all aimed at breathing new life and lightness into organ donation.

By empowering more parents, teachers and healthcare practitioners to have more conversations with more children, they aim to create a society in which organ donation is the accepted norm, thereby increasing the amount of organs donated and increasing the number of subsequent lives saved.

That's why we're all superheroes inside!



For more information and loads more resources, visit us at [Orgamites.com](https://www.Orgamites.com)

Please share your artwork with us so we can share it with the world:

📌 @MightyOrgamites 📷 @MightyOrgamites 🗣️ @MightyOrgamites
#MightyOrgamites #OrganDonationForKids #OrganDonation

OUR PARTNERS



ONASSIS
FOUNDATION



Canadian
Blood
Services
BLOOD
PLASMA
STEM CELLS
ORGANS
& TISSUES



Giving
to help
others

SUPPORTED BY



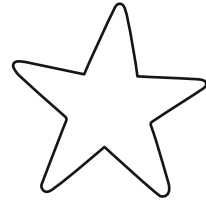
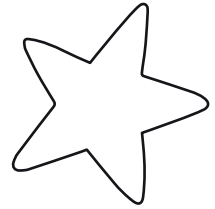
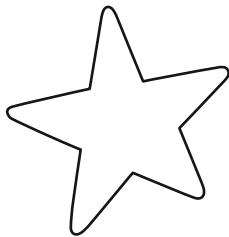
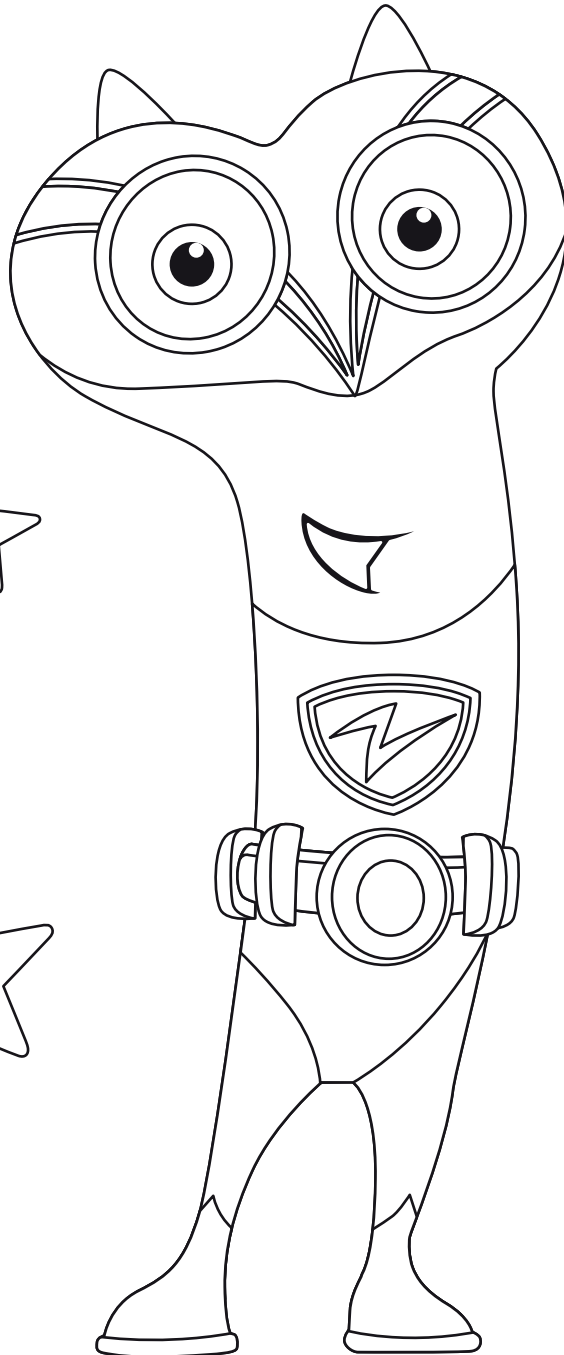
Blood and Transplant

ORGAN
DONATION
SCOTLAND





**CAPTAIN
MALLOW**



ARTIST:

AGE:



HEART



ARTIST:

AGE:



LUNG TWINS

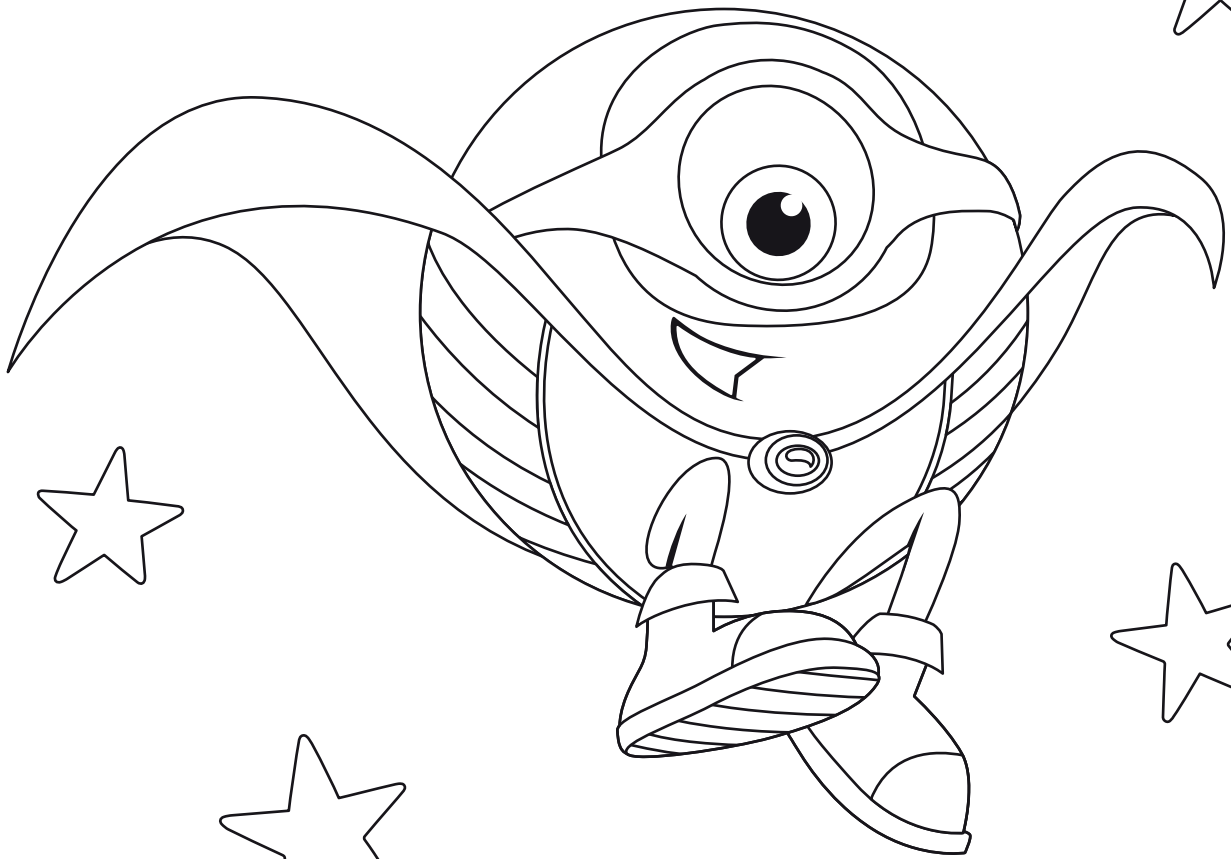


ARTIST:

AGE:



EYE
(CORNEA)

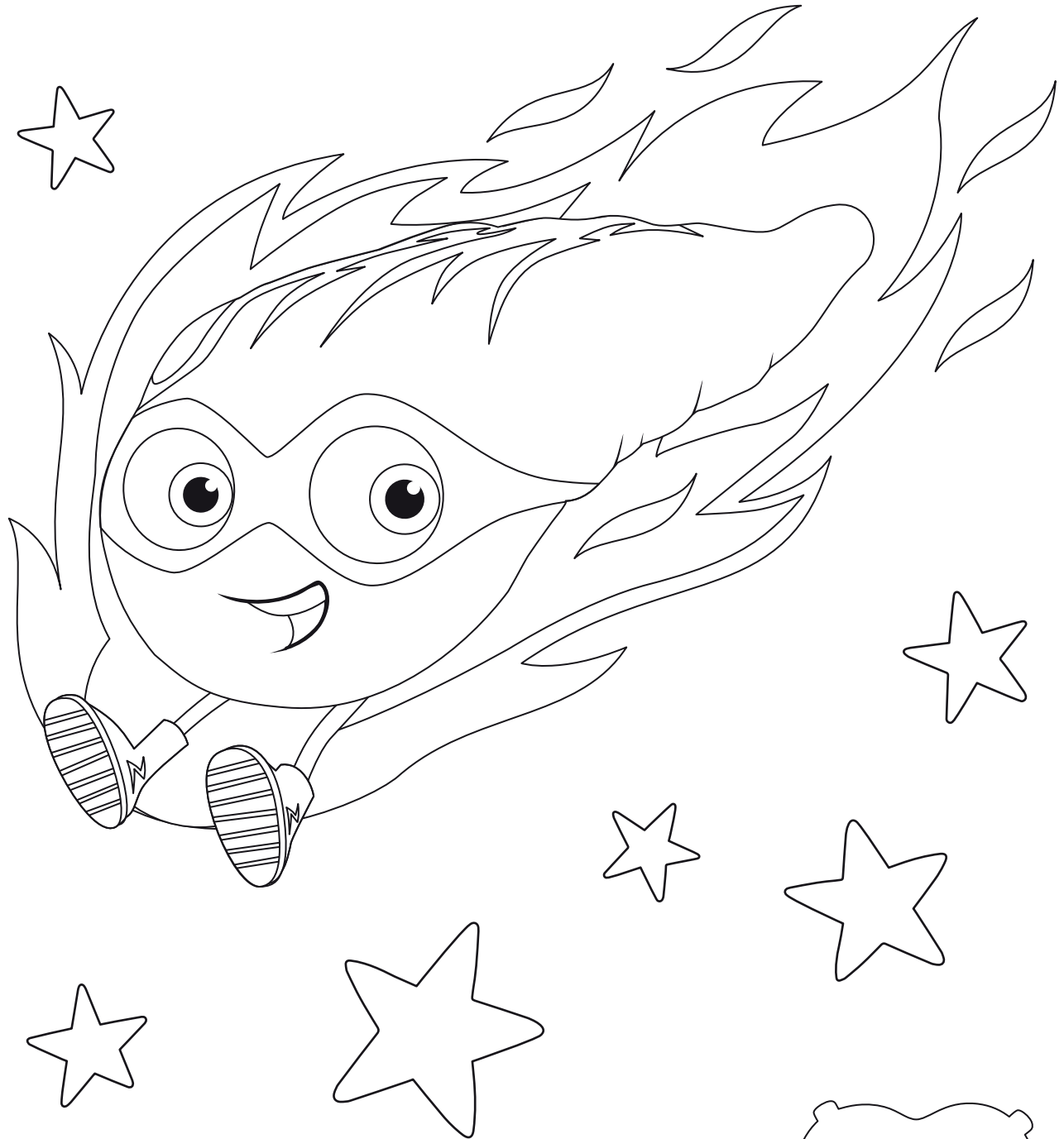


ARTIST: _____

AGE: _____



PANCREAS

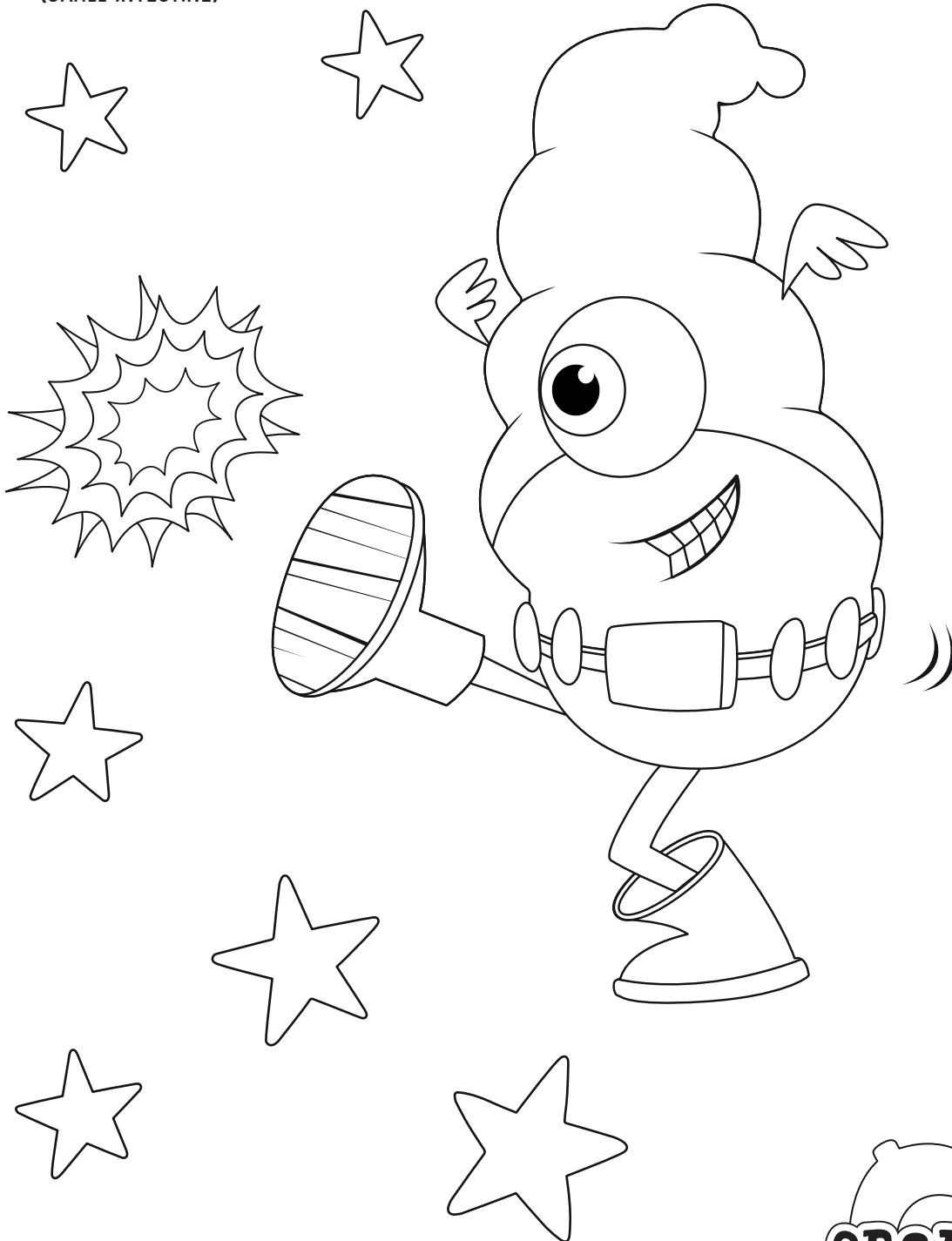


ARTIST:

AGE:



SMALL BOWEL
(SMALL INTESTINE)



ARTIST: _____

AGE: _____



LIVER

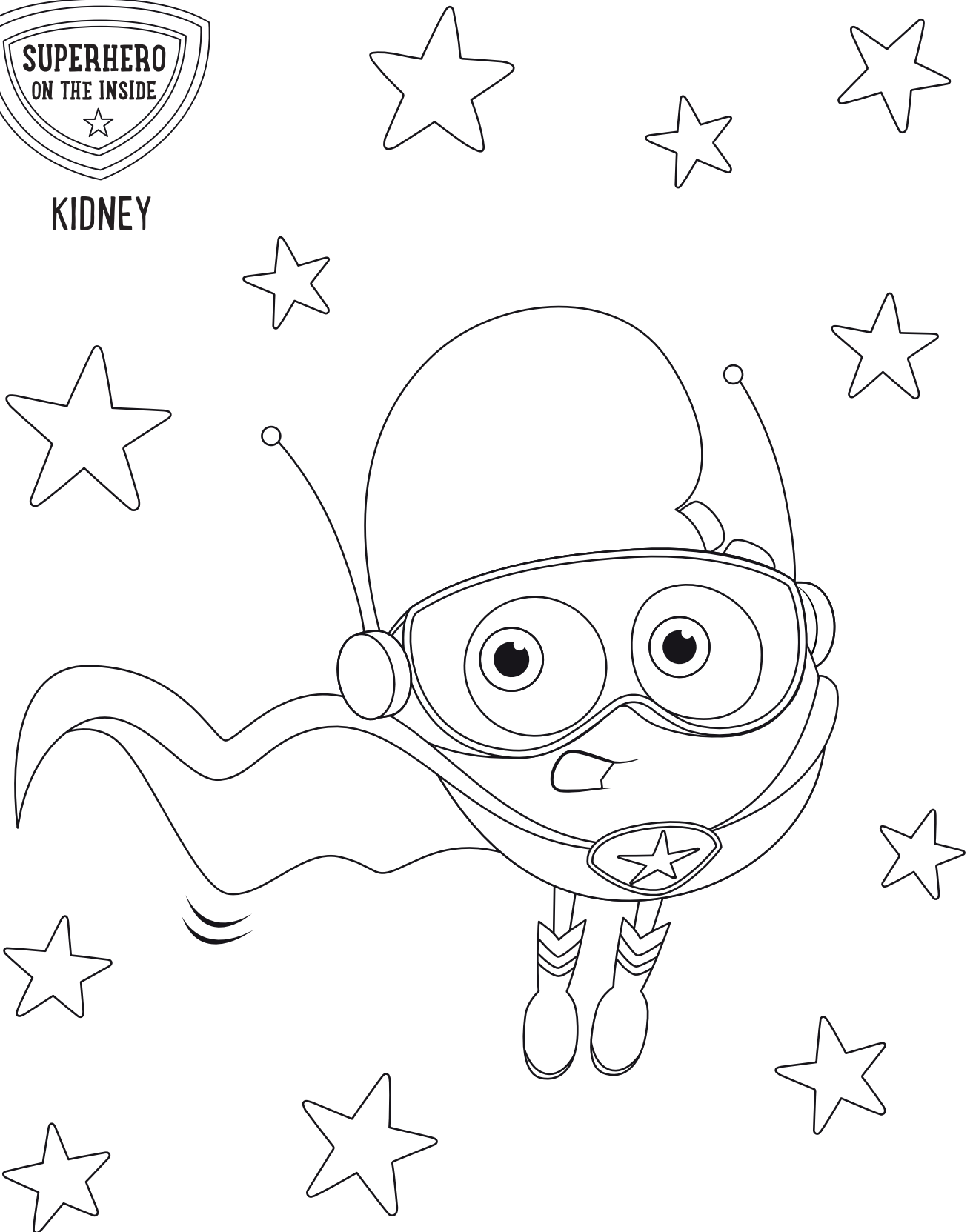


ARTIST: _____

AGE: _____



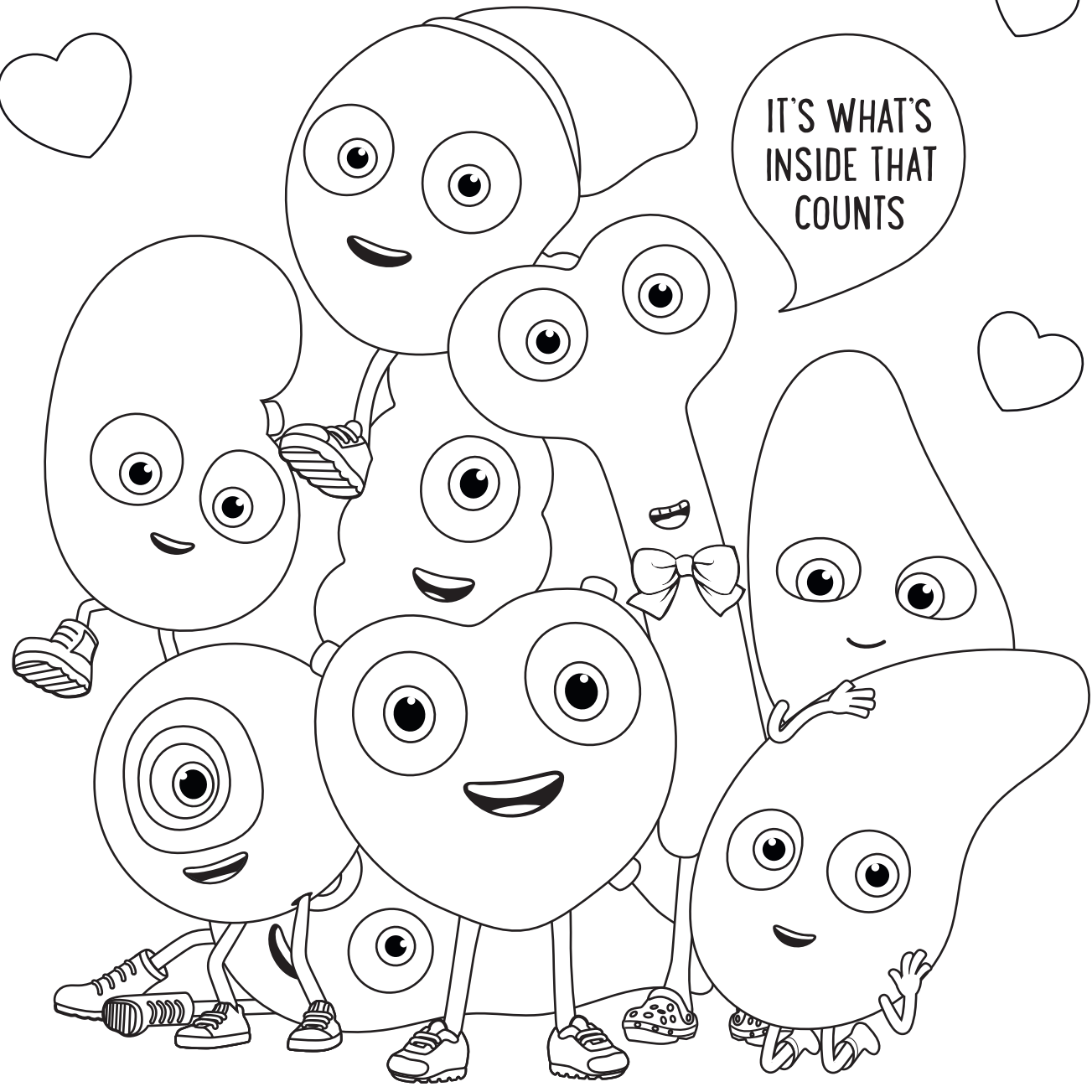
KIDNEY



ARTIST: _____

AGE: _____

Live Life
Give Life



ARTIST: _____

AGE: _____